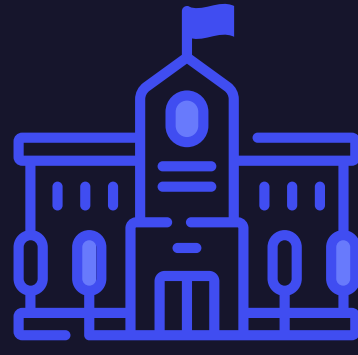


ARPA: Higher Education Emergency Relief (HEERF III)



\$39.6B Awarded to Higher Ed

\$39.2B
to Public and Private
Non-Profit Institutions

\$396M
to proprietary
institutions

100% used for
Student Financial Aid



Distribution

75%

relative share of
Federal Pell Grant
recipients not enrolled
exclusively in distance
education

23%

based on relative share
of **non-Federal Pell
Grant** recipients not
enrolled exclusively in
distance education

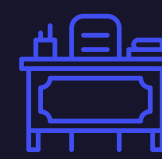
2%

based on relative share
of **Federal Pell Grant**
recipients who enrolled
exclusively in distance
education



**At least 50%
goes to Student
Financial Aid**

**Must prioritize exceptional
need cases** and can be
used for any component of
the student's cost of
attendance or for
emergency costs that arise
due to coronavirus, such as
tuition, food, housing, health
care (including mental
health care).



**Remaining =
Institutional
Portion**

- ✓ Defray expenses related to coronavirus including including lost revenue, reimbursement for expenses already incurred, technology costs associated with a transition to distance education, faculty and staff trainings, and payroll), - acceptable Institutional Portion uses
- ✓ Implement evidence-based practices to monitor & suppress COVID
- ✓ Conduct outreach to financial aid applicants about opportunities to receive financial aid adjustments due to family unemployment or unemployment of an independent student
- ✓ Additional Student Financial Aid.
Acceptable Institutional Portion uses